

*Our Friend Monica*  
Design Portfolio

Bennington Plays 2020

Concept Art by Eloise Gibbin

Orange tree - option #1

(color) - Desk?

looking through

• Look - Day

How do you seal?

What would it mean?



fallen or dead tree  
cut down



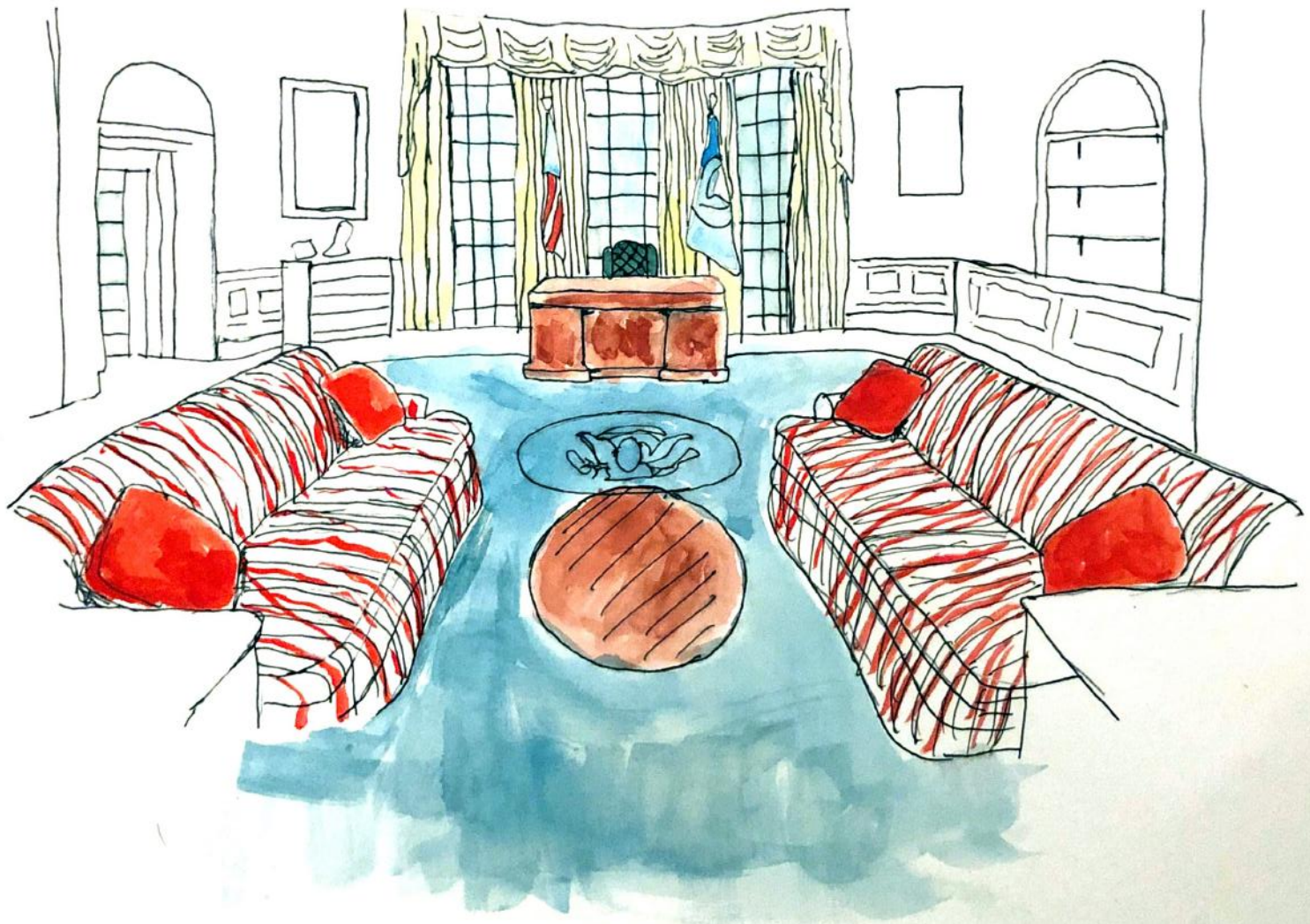














Set Model by Joshua Goldberg







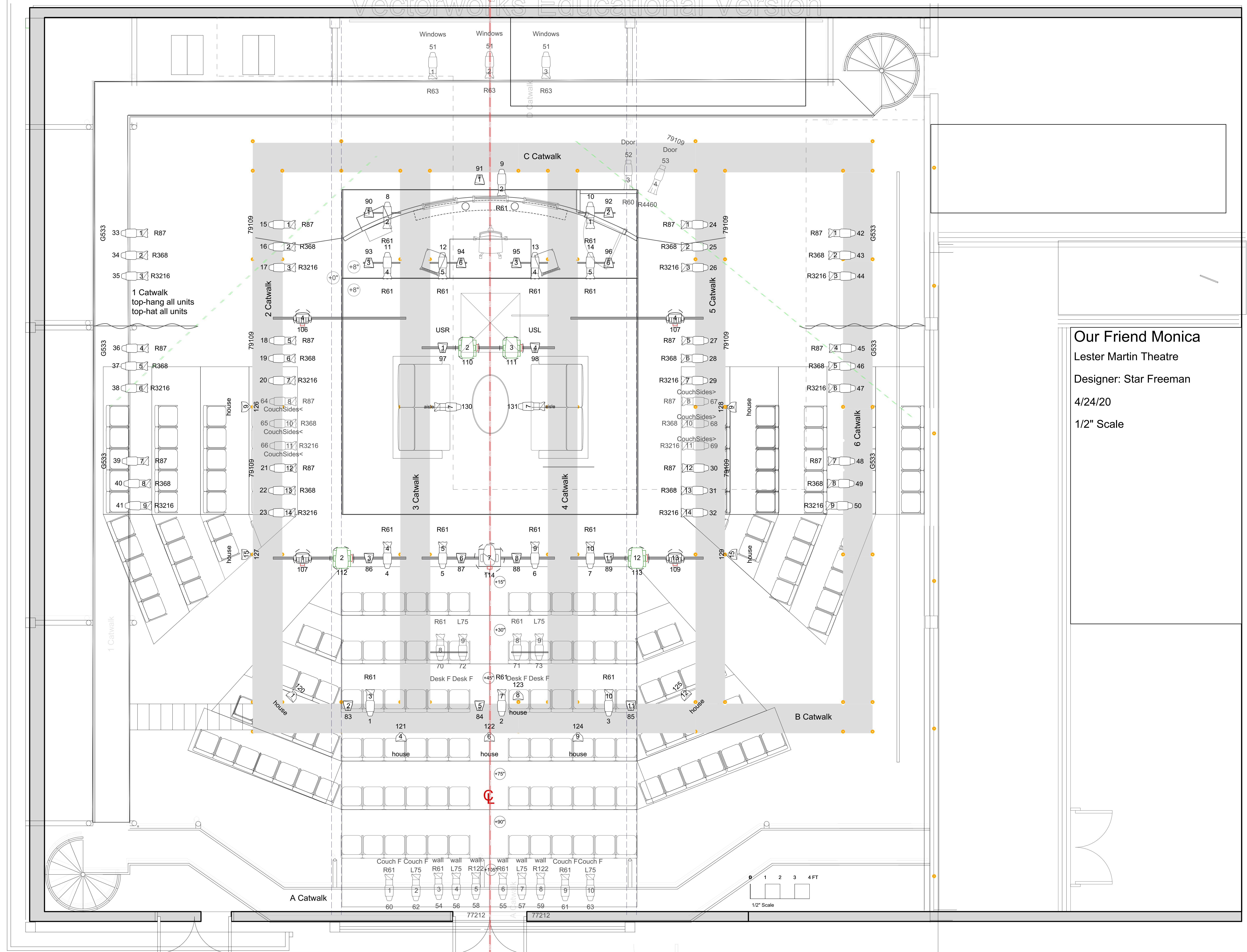




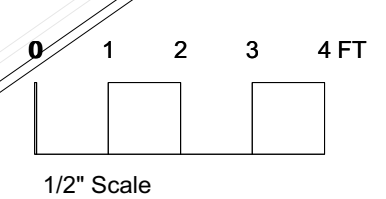




# Light Plot by Star Freeman



**Our Friend Monica**  
 Lester Martin Theatre  
 Designer: Star Freeman  
 4/24/20  
 1/2" Scale



Costume Design by Sabrina Konick

Huma

1



1b  
no  
jacket



1c  
No jacket



2



2B  
No  
scarf

<2C no  
Jacket,  
Sleeves  
rolled up

2D  
Jacket  
on



2E  
Jack  
et 1

2F  
Sunflower  
Pendant  
back



3





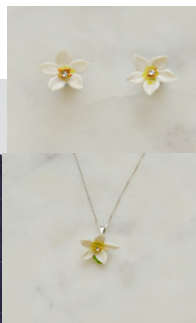
Monica

1



2

2B  
Hair up



3



3B

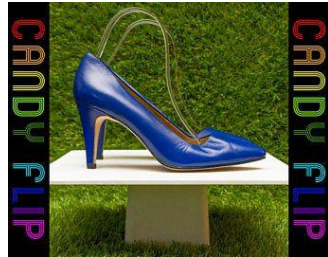


---

3C  
No  
jacket



4



4B  
Hair  
back

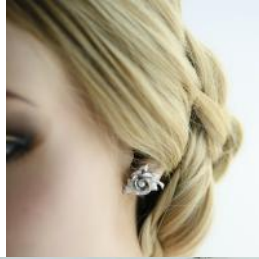
4C  
Hair down  
No  
sweater



4D  
Hair back  
up  
No scarf

Hillary

1



1B

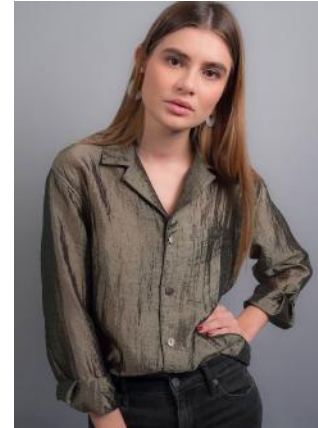


2



2B  
Sickly,  
Hair  
up, no  
jacket  
Pearls  
off

2C hair  
down





3



**Bill**

1





2b



2c no  
jacket



2d





3b tie loose,  
no jacket,  
cuffed sleeves



3c shirt top  
unbuttoned, tie untied



3d v sweaty, tie  
gone, shirt  
completely  
unbuttoned

